



3193 STEAMBOAT RIDGE
WATERFRONT HOME IN TURTLE POINTE AT SPRUCE CREEK FLY-IN

Presented by:



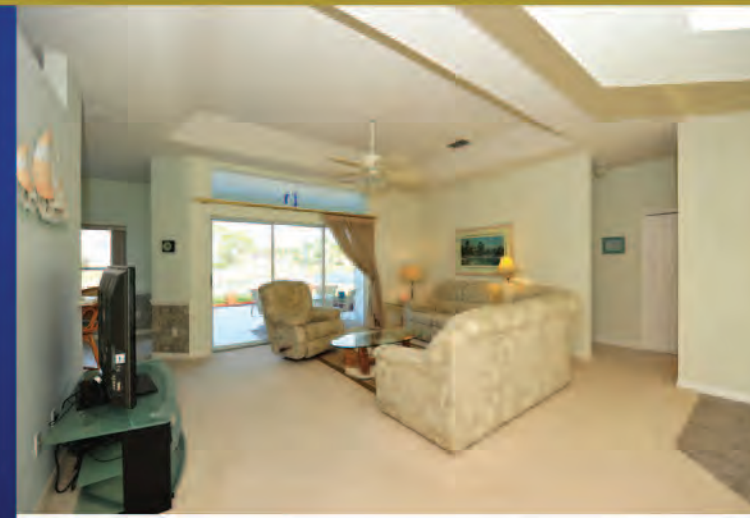
3193 STEAMBOAT RIDGE

WATERFRONT HOME IN TURTLE POINTE AT SPRUCE CREEK FLY-IN



Professional landscaping with tropical foliage and palm trees greet the visitor. Inside, this solid concrete block home features an open design with ceramic tile floors, a neutral decor and plenty of privacy for entertaining. The Lanai offers gorgeous views of the lake as well as airplanes flying the Spruce Creek Fly-In pattern.

This roomy 3-Bedrooms, 2-baths home is built on a unique oversized lot with plenty of room for a pool. Great room with views of the lake and access to the Lanai through glass sliding doors. The open kitchen with separate breakfast room and bar also offers views of the lake through glass sliding doors. Inside laundry room with washer and dryer.



Master suite with large walk-in closet and lake views as well as sliding glass doors to the Lanai. The Master bath features dual vanities and separate tub and shower areas. Ample closet space throughout. Two car garage with attic storage space. Sprinkler System. Also available furnished (extra).

PROPERTY HIGHLIGHTS

- ✦ Living Area 1,573 sq.ft. (2,162 sq.ft. Total)
- ✦ 3 Bedrooms, 2 Baths, 2-Stall Garage
- ✦ Concrete Block Construction, Waterfront
- ✦ Screened Lanai
- ✦ Built by Paytas Builders in 1997

ABOUT THE SPRUCE CREEK FLY-IN...

The Spruce Creek Fly-in Community is the world's most famous residential airpark. With a 4,000 ft lighted runway and a GPS approach, the private airport at the center of the community (7FL6) can accommodate anything from a Stearman to a Gulfstream. Originally a Navy airfield during WWII, it evolved into the world's largest residential fly-in community. Today, almost 5,000 residents, 1,300 homes and 700 hangars share a unique life in this private gated village. The first thing a visitor sees after driving through the security gates is a sign that summarizes the spirit of this community:



"Caution children and adults at play". A championship golf course and Country Club and 24-hr patrolled security complements the safety, privacy and enjoyment of our residents. Learn more about Spruce Creek at 7FL6.com and SpruceCreekJournal.com



- ✦ Six Miles from the Atlantic Ocean and Beaches
- ✦ 4,000-ft Hard-Surfaced Runway
- ✦ Runway Lights and GPS Approach
- ✦ Country Club, Championship Golf Course
- ✦ Private Security



Carlos E. Bravo

386-788-1988

carlos@flyinrealty.com



karlhaus
REALTY



Spruce Creek • Caracas • Madrid • Orlando • Key Biscayne

www.FlyinRealty.com



All offerings subject to errors, omissions, prior sale, changes or withdrawals without notice.
© Copyright 2011 Karlhaus LLC. All Rights Reserved.